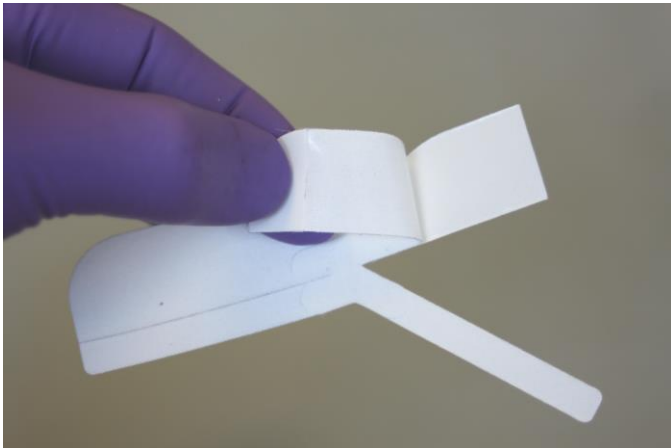


Marpac[®]

Neo/Ped ET Tape, 308 series Instructions



1. Bend the tape to expose the break in the paper backing and begin to remove it.



2. Center and apply to the patient's face.



3. Begin wrapping the angled leg up the tube, followed by the other leg around the tube.



4. Apply the optional support strip under the tube and to the patient's face.



5. Apply the optional cover piece over the entire product. (The cover is only for aesthetics.)



6. The finished product applied to the patient.